



THE ALPINE RIDGE - Includes: Delivery, Set, AC

Model number: 37FAC16763DH18

3 beds • 2 baths • 1216 sq.ft. • 16' width • 76' depth

Our home building facilities invest in continuous product and process improvements. Plans, dimensions, features, materials, specifications and availability are subject to change without notice or obligation. Renderings and floor plans are representative likenesses of our homes and may differ from the actual homes. We invite you to tour a Home Center near you and inspect the highest value in quality housing available or call (870) 935-1700 to speak with a Home Consultant. Copyright 2017, CMH. All rights reserved.

<https://www.claytonhomesjonesboro.com>

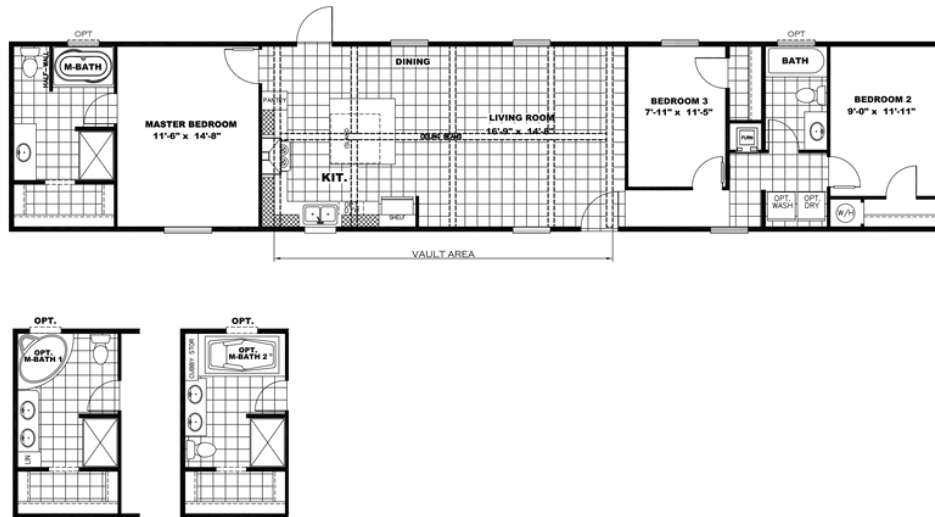
CLAYTON HOMES-
JONESBORO

3920 STADIUM BLVD
JONESBORO, AR 72404

Monday - Thursday: 9am to 5pm
Friday: 9am to 5pm
Saturday: 9am to 5pm
Sunday: Closed

(870) 935-1700





THE ALPINE RIDGE - Includes: Delivery, Set, AC

Model number: 37FAC16763DH18

3 beds • 2 baths • 1216 sq.ft. • 16' width • 76' depth

Our home building facilities invest in continuous product and process improvements. Plans, dimensions, features, materials, specifications and availability are subject to change without notice or obligation. Renderings and floor plans are representative likenesses of our homes and may differ from the actual homes. We invite you to tour a Home Center near you and inspect the highest value in quality housing available or call (870) 935-1700 to speak with a Home Consultant. Copyright 2017, CMH. All rights reserved.

<https://www.claytonhomesjonesboro.com>

**CLAYTON HOMES-
JONESBORO**

**3920 STADIUM BLVD
JONESBORO, AR 72404**

Monday - Thursday: 9am to 5pm
Friday: 9am to 5pm
Saturday: 9am to 5pm
Sunday: Closed

(870) 935-1700